







**POLEAS DENTADAS PARA TAPER**

Taper bored timing belt pulleys

Poulies dentées pour moyeu amovible

**H 100**

Paso 1/2" (12,7 mm)

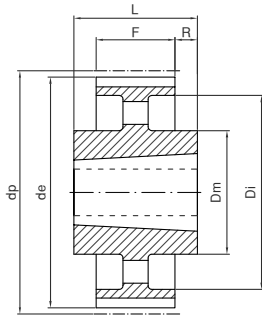
Pitch

Pas

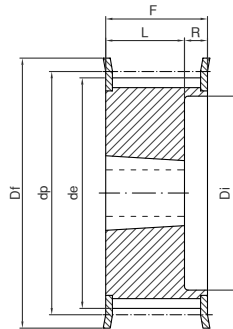
Para correas de ancho 1" (25,4 mm)

For belt width

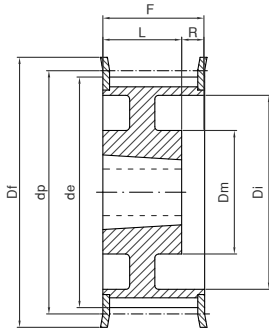
Pour courroies largeur



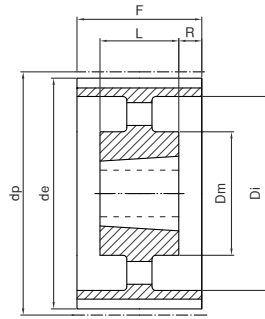
14



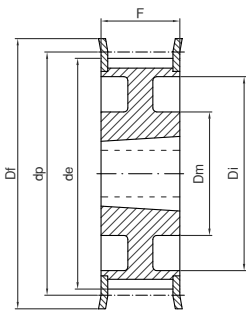
16F



17F



20



21F

Ref.	Material	Z	Taper	Ø max.	dp	de	Df	Dm	Di	F	L	R	Fig.	Kg.
TL16H100	St	16	1108	28	64,68	63,31	71		45	31,0	22,0	9,0	16F	0,42
TL18H100	St	18	1210	32	72,77	71,39	79		52	31,0	25,0	6,0	16F	0,49
TL19H100	St	19	1210	32	76,81	75,44	83		56	31,0	25,0	6,0	16F	0,62
TL20H100	St	20	1210	32	80,85	79,48	87		60	31,0	25,0	6,0	16F	0,73
TL21H100	St	21	1210	32	84,89	83,52	91		64	32,0	25,0	7,0	16F	0,80
TL22H100	St	22	1210	32	88,94	87,56	93		67	32,0	25,0	7,0	16F	0,94
TL23H100	St	23	1610	42	92,98	91,61	97		70	32,0	25,0	7,0	16F	0,97
TL24H100	St	24	1610	42	97,02	95,65	103		73,5	32,0	25,0	7,0	16F	1,05
TL25H100	St	25	1610	42	101,06	99,69	106		77	32,0	25,0	7,0	16F	1,10
TL26H100	St	26	1610	42	105,11	103,73	111		82	32,0	25,0	7,0	16F	1,20
TL27H100	St	27	1610	42	109,15	107,78	115		85	32,0	25,0	7,0	16F	1,35
TL28H100	St	28	1610	42	113,19	111,82	119		90,5	32,0	25,0	7,0	16F	1,50
TL30H100	St	30	1610	42	121,28	119,90	127		98	32,0	25,0	7,0	16F	1,78
TL32H100	St	32	1610	42	129,36	127,99	135	90	106	32,0	25,0	7,0	17F	2,05
TL36H100	St	36	1610	42	145,53	144,16	152	92	121	32,0	25,0	7,0	17F	2,80
TL40H100	St	40	1610	42	161,70	160,33	168	92	138	32,0	25,0	7,0	17F	3,65
TL44H100	St	44	2012	50	177,87	176,50	184	106	152	32,0	32,0		21F	3,86
TL48H100	St	48	2012	50	194,04	192,67	200	106	169	32,0	32,0		21F	4,20
TL60H100	GG	60	2012	50	242,55	241,18		106	223	34,0	32,0	1,0	20	3,76
TL72H100	GG	72	2012	50	291,06	289,69		106	270	34,0	32,0	1,0	20	4,88
TL84H100	GG	84	2012	50	339,57	338,20		106	318	34,0	32,0	1,0	20	6,12
TL96H100	GG	96	2517	60	388,08	386,71		119	366	34,0	45,0	5,5	14	7,95
TL120H100	GG	120	2517	60	485,10	483,73		119	462	34,0	45,0	5,5	14	10,05

Material: Acero/Steel/Acier (St)

Material: Fundición/Cast iron/Fonte (GG)





